



Hyatt Centric Melbourne

HYATT CENTRIC™

Hyatt Centric Melbourne



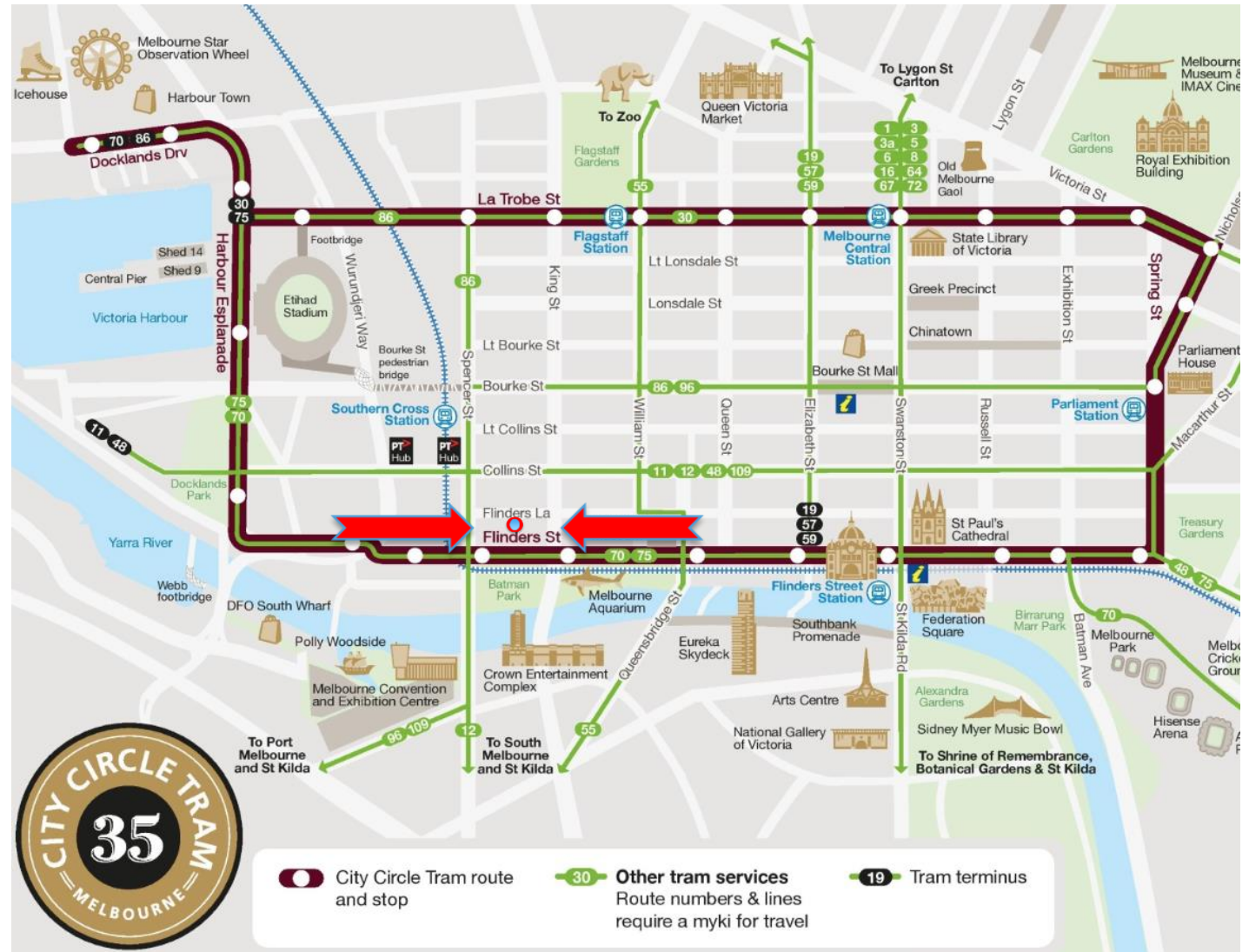
Hyatt Centric Melbourne features 277 guestrooms and a restaurant inspired by Melbourne's foodie scene – it's the perfect inner-city location for your stay and a launch pad for guests to explore everything Melbourne has to offer.

Each spacious guest room features locally inspired design, with spaces to work, sleep, and play.

Location

Located in the south west corner of Melbourne CBD, right in the heart of the city at 25 Downie Street.

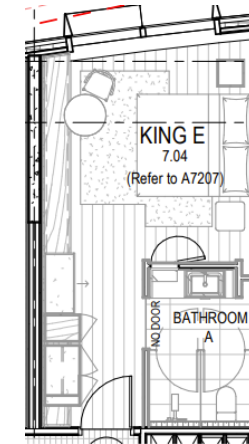
- Moments away from Southern Cross Station and within the free tram city zone.
- 850m walk to Marvel Stadium
- 450m walk (6 minutes) from the MCEC
- 15 min walk to Southbank
- 1.3 km to Federation Square
- 1.4 km to Bourke St Mall
- 24 km from the Melbourne Airport



Room Types

1 King Bed (47 Rooms) / 2 Twin Beds (44 Rooms)

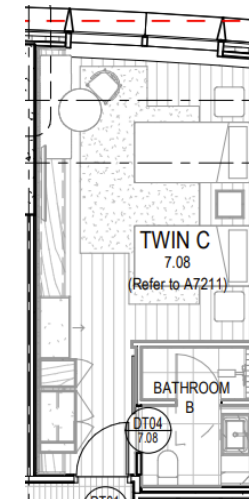
- In-room safe
- 50" HD Smart TV
- Complimentary high-speed Wi-Fi
- Nespresso™ machine with complimentary recyclable pods
- Individually controlled temperature
- Minibar (drinks only)
- 100% waste-free bathroom amenities by Mr. Smith



Average size of room 32 sq m. Indicative floorplan only

1 King View (65 Rooms) / 2 Twin View (45 Rooms)

- Located on floors 12 to 24
- In-room safe
- 50" HD Smart TV
- Complimentary high-speed Wi-Fi
- Nespresso™ machine with complimentary recyclable pods
- Individually controlled temperature
- Minibar (drinks only)
- 100% waste-free bathroom amenities by Mr. Smith

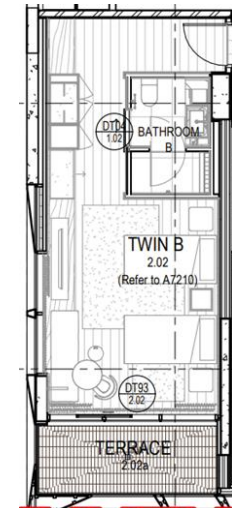
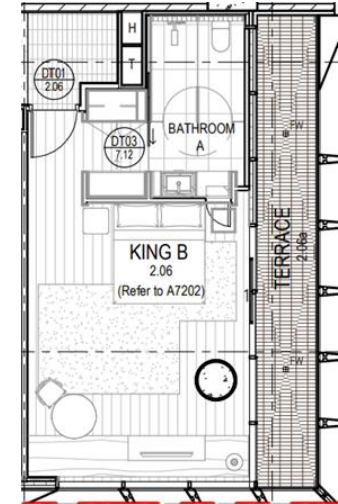


Average size of room 32 sq m. Indicative floorplan only

Room Types

1 King Bed with Balcony (4 Rooms) / 2 Twin Beds with Balcony (4 Rooms)

- Private Balcony
- Located on the 1st to 4th floors
- Pet friendly
- In-room safe
- 50" HD Smart TV
- Complimentary high-speed Wi-Fi
- Nespresso™ machine with complimentary recyclable pods
- Individually controlled temperature
- Minibar (drinks only)
- 100% waste-free bathroom amenities by Mr. Smith



Average size of room 40 sq m. Indicative floorplan only

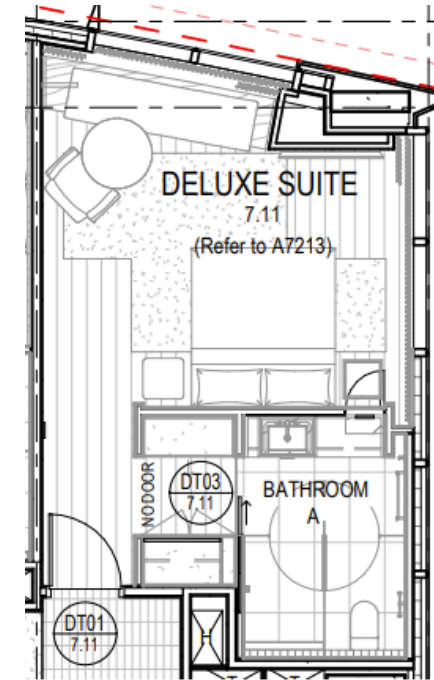
Room Types

1 King Bed Deluxe (31 Rooms)

- Located on floors 7 and 17
- In-room safe
- 50" HD Smart TV
- Complimentary high-speed Wi-Fi
- Nespresso™ machine with complimentary recyclable pods
- Individually controlled temperature
- Minibar (drinks only)
- 100% waste-free bathroom amenities by Mr. Smith

1 King Bed View Deluxe (23 Rooms)

- Views of city and Port Phillip Bay
- Located on floors 7 and 17
- In-room safe
- 50" HD Smart TV
- Complimentary high-speed Wi-Fi
- Nespresso™ machine with complimentary recyclable pods
- Individually controlled temperature
- Minibar (drinks only)
- 100% waste-free bathroom amenities by Mr. Smith

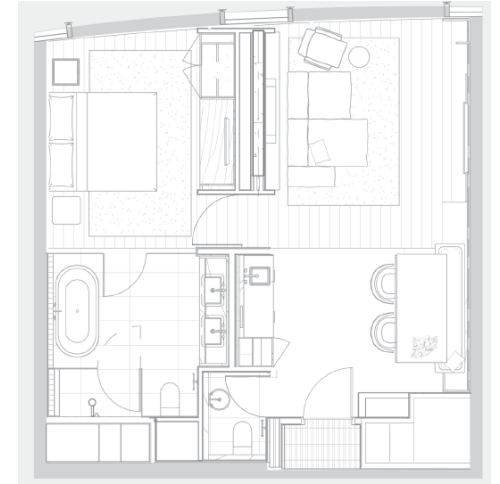


*Average size of
room 40 sq m.
Indicative
floorplan only*

Room Types

King Suite (11 Rooms)

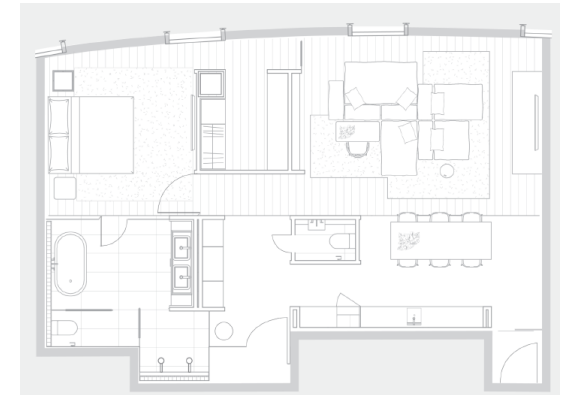
- Located on floors 17-20
- In-room safe
- 50" HD Smart TV
- Complimentary high-speed Wi-Fi
- Nespresso™ machine with complimentary recyclable pods
- Individually controlled temperature
- Minibar (drinks only)
- 100% waste-free bathroom amenities by Mr. Smith
- Amenities by Appelles
- Separate shower and bath



Average size of room 64 sq m.
Indicative floorplan only

Premier Suite (3 Rooms)

- Located on floors 17-20
- In-room safe
- 50" HD Smart TV
- Complimentary high-speed Wi-Fi
- Nespresso™ machine with complimentary recyclable pods
- Individually controlled temperature
- Minibar (drinks only)
- 100% waste-free bathroom amenities by Mr. Smith
- Amenities by Appelles
- Separate double shower and bath
- Separate living, dining and bedroom areas
- Two HD Smart TVs



Average size of room 96 sq m.
Indicative floorplan only

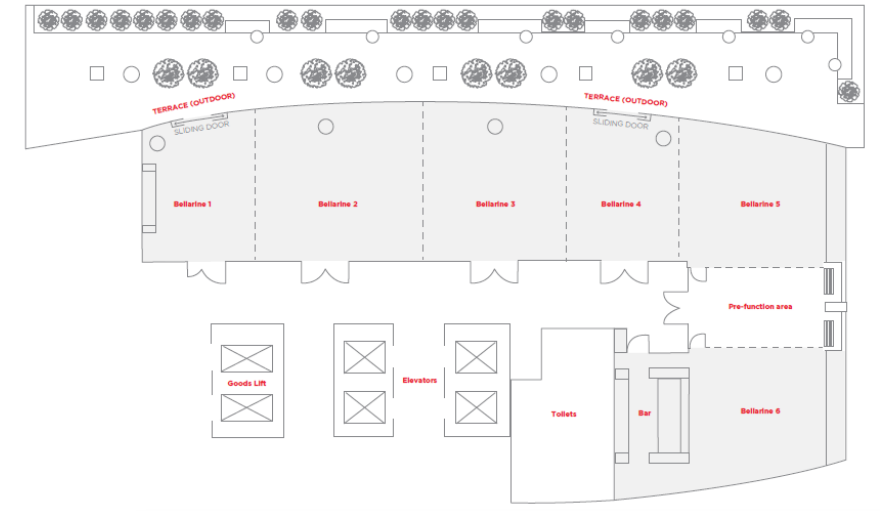
Bellarine Events Floor

With 257 square meters of stylish space, plus a beautiful 210 square meter alfresco terrace, Hyatt Centric Melbourne provides a memorable location to hold business meetings, professional conferences, social events and elegant weddings.

ROOM CAPACITIES AND DIMENSIONS



Room Name	Room Size Sq. M.	Banquet 10	Reception	Theater	Classroom	Boardroom	U-Shape	Cabaret
LEVEL 6								
Bellarine I	31	20	31	20	18	14	-	16
Bellarine II	54	50	54	56	27	22	21	40
Bellarine III	44	40	44	48	27	22	21	32
Bellarine IV	31	20	31	32	18	14	-	16
Bellarine V	38	40	38	56	27	22	21	32
Bellarine VI	38	30	38	56	27	22	21	24
Bellarine I to V	201	150	200	200	117	-	-	120





Leisure and Dining

- Level 25 Restaurant and Bar
- Allie Lane Café
- Indoor 25m pool
- 24-hour fitness studio

